

Thrust Angles

1122.300

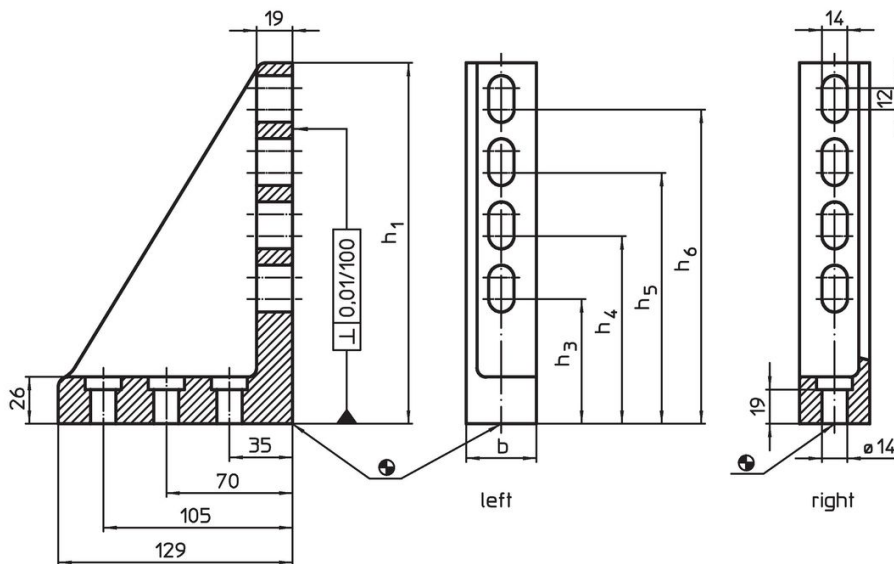


Product Description

Material

- Grey cast iron, phosphatized, ground

Drawing



Order information

System	Dimensions						Position of web	[g]	Art. No.
	b	h ₁	h ₃	h ₄	h ₅	h ₆			
V70	66	200	69	104	139	174	right	3466	1122.300

Compliance

RoHS compliant

Compliant according to Directive 2011/65/EU and Directive 2015/863.

Does not contain SVHC substances

No SVHC substances with more than 0.1% w/w contained - SVHC list [REACH] as of 27.06.2024.

Does not contain Proposition 65 substances

No Proposition 65 substances included.

<https://www.P65Warnings.ca.gov/>

Free from Conflict Minerals

This product does not contain any substances designated as "conflict minerals" such as tantalum, tin, gold or tungsten from the Democratic Republic of Congo or adjacent countries.