

## Self-Aligning Pads · with hard metal ball, ribbed and self-resetting

22731.0380



### Product Description

Especially designed for cast parts (hard casting crust). To be used as support, thrust pad and for build into clamping elements.

By resetting to the parallel position the contact point of the self-aligning pad provides a defined initial position, thus preventing the pad clamping in an oblique position when inserting the workpiece.

### Material

#### Spring element

- Thermoplastic PUR

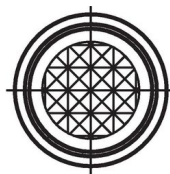
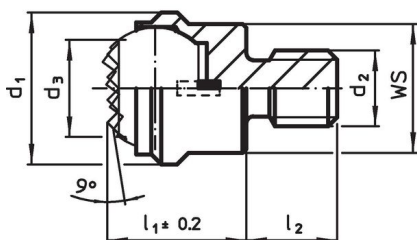
#### Ball

- Hard metal, ribbed, nickel-plated

#### Body

- Heat-treated steel, tempered, phosphated

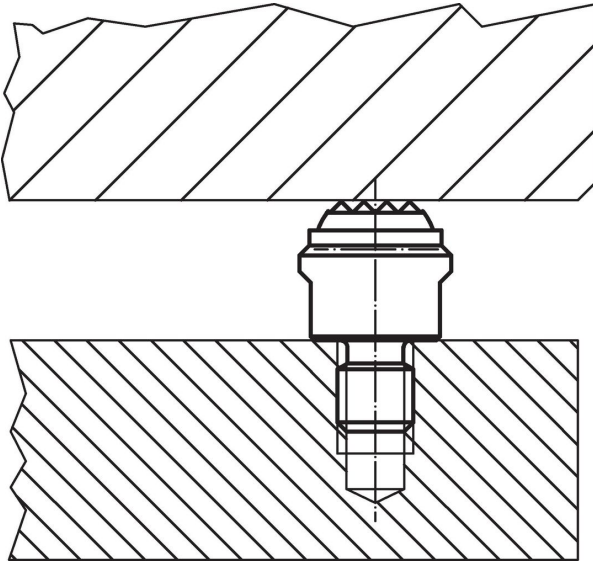
### Drawing



### Order information

d <sub>1</sub>	d <sub>2</sub>	Dimensions			Ball diameter	WS [mm]	Load capacity for static load max. [kN]	Tightening torque max. [Nm]	[g]	Art. No.
		d <sub>3</sub>	l <sub>1</sub> ±0.2 [mm]	l <sub>2</sub> -0.5						
with male thread, flat-faced ball, bearing surface ribbed, Heat-treated steel										
20	M12	13.2	18	12	16	17	25	82	53	22731.0380

## Application example



## Compliance

### RoHS compliant

Compliant according to Directive 2011/65/EU and Directive 2015/863.

### Does not contain SVHC substances

No SVHC substances with more than 0.1% w/w contained - SVHC list [REACH] as of 27.06.2024.

### Does not contain Proposition 65 substances

No Proposition 65 substances included.

<https://www.P65Warnings.ca.gov/>

### Free from Conflict Minerals

This product does not contain any substances designated as "conflict minerals" such as tantalum, tin, gold or tungsten from the Democratic Republic of Congo or adjacent countries.