

## Tubular Handles • straight

24321.0265



### Product Description

Tubular handles are used, for example, on machine doors.

### Material

#### Handle

- Aluminium, anodised

#### Handle shank

- Zinc die-cast
- Zinc die-cast, plastic coated, silver, similar to RAL 9006, matt structure

#### Cap

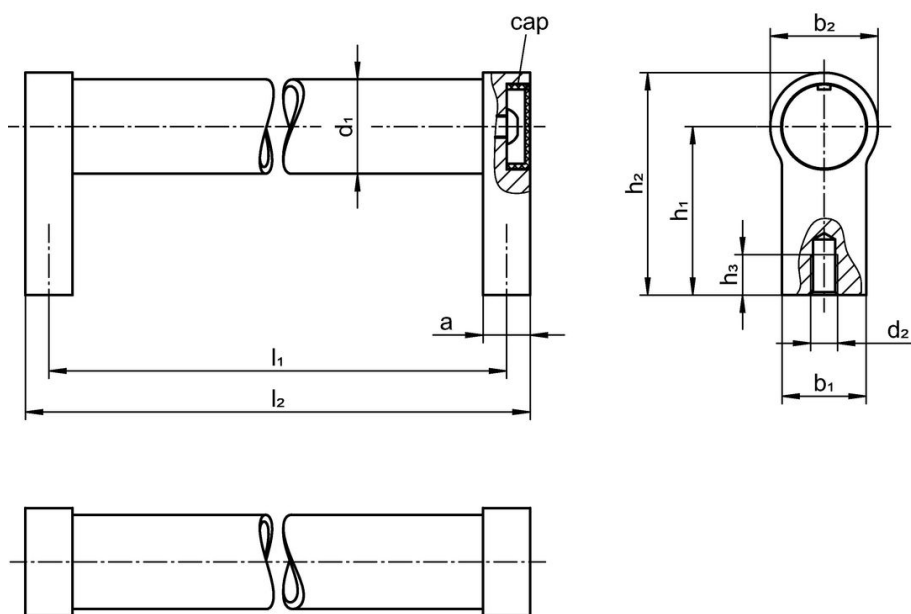
- Plastic, light grey

### More information

#### Notes

Customized design on request.

### Drawing



### Order information

Dimensions									Art. No.	
$d_1$	$l_1$ $\pm 0.25$	$a$	$b_1$	$d_2$ [mm]	$h_1$	$h_2$	$h_3$ min.	$l_2$		
28	600	14	25	M8	50	66	15	614	500	24321.0265

silver similar to RAL 9006

[g]

## Compliance

### RoHS compliant

Compliant according to Directive 2011/65/EU and Directive 2015/863.

### Does not contain SVHC substances

No SVHC substances with more than 0.1% w/w contained - SVHC list [REACH] as of 27.06.2024.

### Does not contain Proposition 65 substances

No Proposition 65 substances included.

<https://www.P65Warnings.ca.gov/>

### Free from Conflict Minerals

This product does not contain any substances designated as "conflict minerals" such as tantalum, tin, gold or tungsten from the Democratic Republic of Congo or adjacent countries.