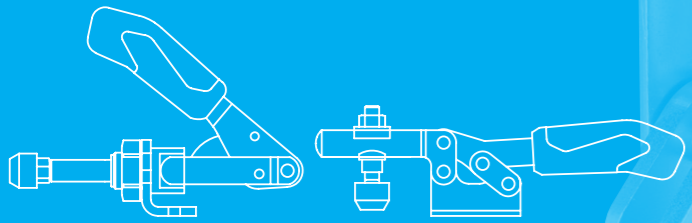
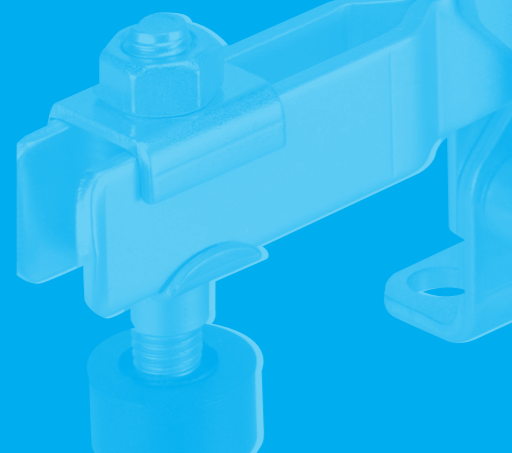


VERY EASY

NEW



THE „TOGGLE“ PRINCIPLE.
JUST CLEVER.



HALDER

Erwin Halder KG
Erwin-Halder-Straße 5-9
88480 Achstetten-Bronnen
Germany

T +49 7392 7009-0
F +49 7392 7009-160
info@halder.com
www.halder.com

MADE IN
GERMANY.

HALDER

TOGGLE CLAMPS NEWS

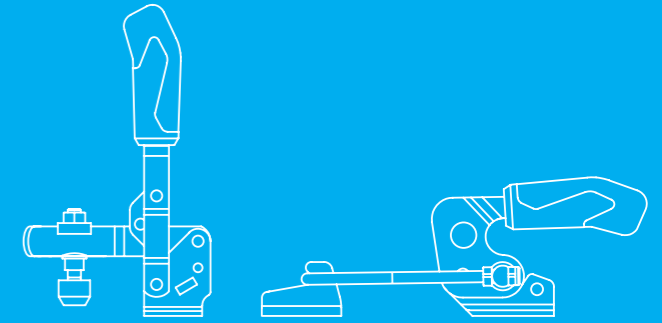


EN/500/09.18

www.halder.com

FULL CLAMPING FORCE...

EASY AND SAFE TIGHTENING OF COMPONENTS.



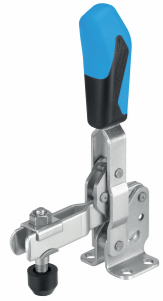
THE TOGGLE CLAMPS OF HALDER.

Short set-up times are crucial for an economical production. This is where a clamping system quickly becomes a decisive cost factor. With the toggle clamps of Erwin Halder KG the user can not only tighten workpieces and components precisely and safely, moreover the easy handling also ensures a fast and easy change of parts to be processed. The ergonomic handle, the robust and durable construction as well as a safety clamping piece – which prevents injury during operation – are additional advantages of the Halder toggle clamps.

OUR PRODUCT RANGE

VERTICAL TOGGLE CLAMPS

Vertical Toggle Clamps • with horizontal base



- the opening angle of the handle can be changed by pressing in a stop pin

NEW

ADVANTAGES

Toggle Clamps general:

- favourable power to movement ratio
- easy action
- oil resistant, ergonomic 2-component handle, with increased grip area with soft surface
- the "toggle" principle: allows a large and quick opening of the clamp
- unimpeded removal of the workpiece while unclamped
- the large power transmission results maximum clamping force by low hand force
- the clamps are self-arresting and they remain locked, resisting the force produced when machining components
- high quality components
- continuous use
- high ease of use
- clamping screws with retainer

HORIZONTAL TOGGLE CLAMPS

Horizontal Toggle Clamps • with horizontal base



NEW

Possible applications:

In devices of the automotive industry, the metal working industry as well as in the wood and plastic industry and in many other industries and areas, e.g. for pressing, clamping and positioning of components. Basically the toggle clamps are used in devices when grinding, welding, bending, fitting and drilling.

TOGGLE CLAMPS PUSH-PULL TYPE

Toggle Clamps Push-Pull Type • with angle base



NEW

Toggle Clamps Push-Pull Type • with fastening thread



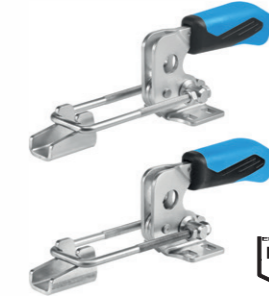
NEW

Product overview:



TOGGLE CLAMPS HOOK TYPE

Toggle Clamps Hook Type • with horizontal base



- steel, zinc-plated by galvanization, passivated

NEW

- stainless steel



Possible applications:

Closing of molds and containers.

FURTHER PRODUCTS

In addition to the standard program from stock other versions can be delivered at short notice upon request.