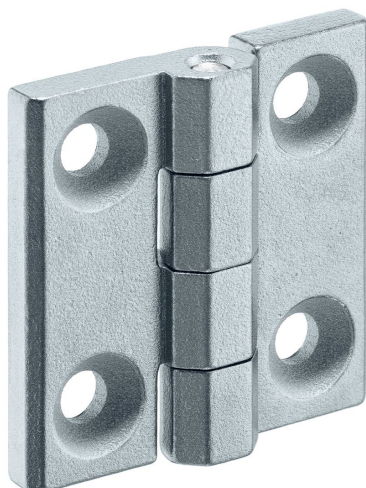


## Hinges

25160.0110



### Product Description

These hinges are characterised by their compact and stable construction.

#### Material

##### Body

- Zinc die-cast, plastic coated, silver, similar to RAL 9006, matt structure

##### Axis

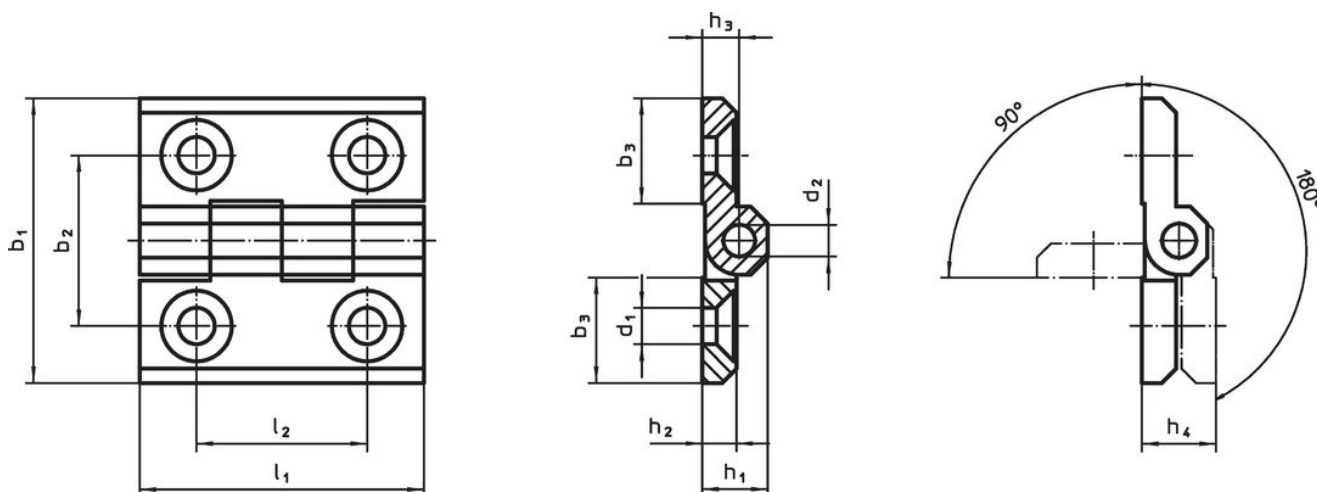
- Stainless steel

#### More information

##### Further products

- Spacer Plates, for hinges
- Threaded Plates, for hinges
- Stops, for hinges

### Drawing



### Order information

Dimensions											[g]	Art. No.	
b <sub>1</sub>	b <sub>2</sub>	b <sub>3</sub>	d <sub>1</sub>	d <sub>2</sub>	h <sub>1</sub>	h <sub>2</sub>	h <sub>3</sub>	h <sub>4</sub> +0.5	l <sub>1</sub>	l <sub>2</sub>			
Zinc die-cast, silver													
40	25	14	5.3	4	9	5	5.5	11	40	25	48	25160.0110	

## Compliance

### RoHS compliant

Compliant according to Directive 2011/65/EU and Directive 2015/863.

### Does not contain SVHC substances

No SVHC substances with more than 0.1% w/w contained - SVHC list [REACH] as of 27.06.2024.

### Does not contain Proposition 65 substances

No Proposition 65 substances included.

<https://www.P65Warnings.ca.gov/>

### Free from Conflict Minerals

This product does not contain any substances designated as "conflict minerals" such as tantalum, tin, gold or tungsten from the Democratic Republic of Congo or adjacent countries.