

## Supporting Plates

EH 1547.900 - EH 1647.900

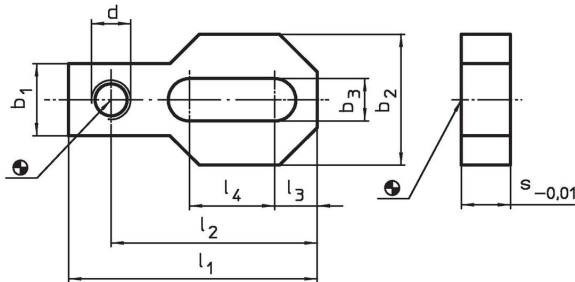


### Product Description

#### Material

- Steel, case-hardened, ground

### Drawing



### Order information

System	Dimensions										Art. No.
	$l_1$	$l_2$	$l_3$	$l_4$	$b_1$	$b_2$	$b_3$	$s$	$d$	[g]	
L12	76	63	13	26	22	40	13	15	M12	213	1547.900
L16	100	83	21	33	34	60	17	20	M16	567	1647.900

### Compliance

#### RoHS compliant

Compliant according to Directive 2011/65/EU and Directive 2015/863.

#### Does not contain SVHC substances

No SVHC substances with more than 0.1% w/w contained - SVHC list [REACH] as of 27.06.2024.

#### Does not contain Proposition 65 substances

No Proposition 65 substances included.  
<https://www.P65Warnings.ca.gov/>

#### Free from Conflict Minerals

This product does not contain any substances designated as "conflict minerals" such as tantalum, tin, gold or tungsten from the Democratic Republic of Congo or adjacent countries.