

## Positioning Clamping Bars

EH 1549.200 - EH 1649.200

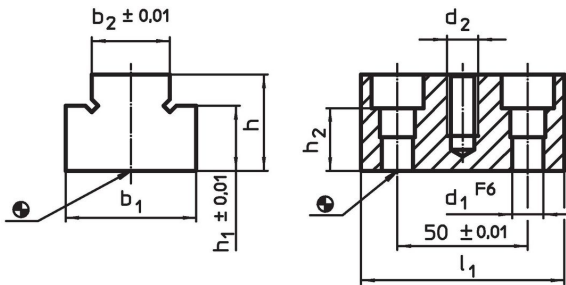


### Product Description


#### Material

- Steel, case-hardened, ground

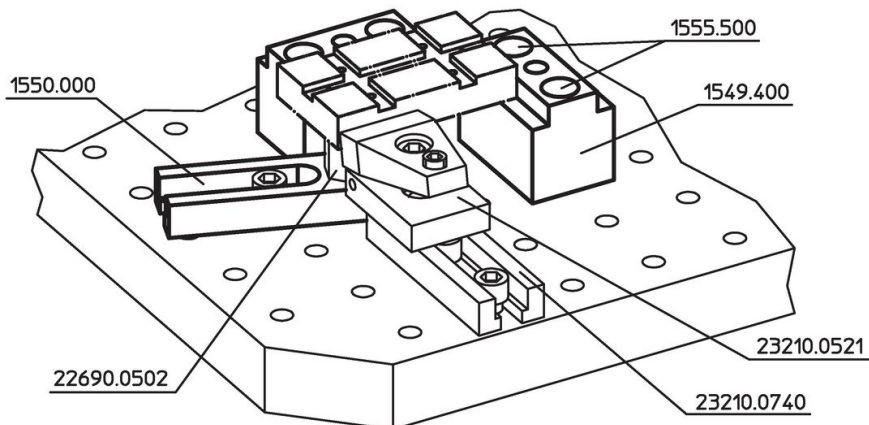
### Drawing



### Order information

System	Dimensions								 [g]	Art. No.
	$l_1$	$b_1$	$h$	$b_2$	$h_1$	$h_2$	$d_1$	$d_2$		
L12	78	50	37	30	25	24	12	M12	834	<a href="#">1549.200</a>
L12	78	50	57	30	45	24	12	M12	1317	<a href="#">1549.400</a>
L16	90	60	45	40	35	25	16	M16	1439	<a href="#">1649.200</a>

### Application example



## Compliance

### RoHS compliant

Compliant according to Directive 2011/65/EU and Directive 2015/863.

### Does not contain SVHC substances

No SVHC substances with more than 0.1% w/w contained - SVHC list [REACH] as of 27.06.2024.

### Does not contain Proposition 65 substances

No Proposition 65 substances included.

<https://www.P65Warnings.ca.gov/>

### Free from Conflict Minerals

This product does not contain any substances designated as "conflict minerals" such as tantalum, tin, gold or tungsten from the Democratic Republic of Congo or adjacent countries.