

Push Plungers · with pin, protected against rotating

EH 23230.



Product Description

The push plunger is suitable for easy and safe positioning of workpieces or components at stops and support points prior to clamping or assembly.
Locating pins of your own profile or design can be attached to our threaded pin types.

Material

Pin

- Steel, case-hardened, blackened

Body

- Steel, zinc-plated by galvanization

Grub Screw

- Steel, blackened, with brass pad

Mounting block

- Zinc die-cast, plastic coated, black

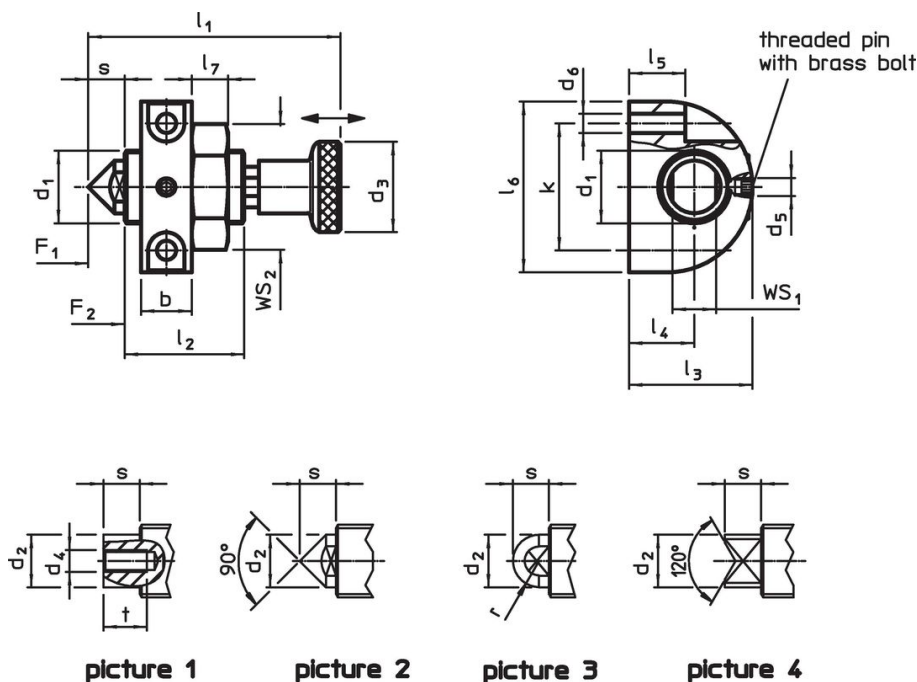
Knob

- Steel, blackened

Lock nut

- Steel, blackened

Drawing



Order information

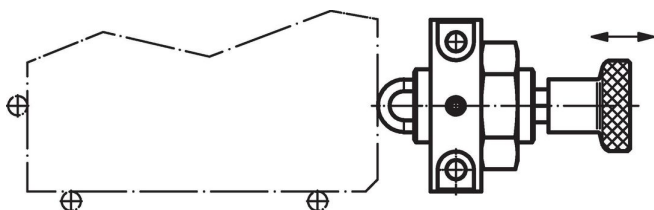
Dimensions															Stroke s	WS		Spring load ¹⁾		max. [°C]	[g]	Art. No.		
d ₁	d ₂	d ₃	d ₄	d ₅	d ₆	l ₁	l ₂	l ₃	l ₄	l ₅	l ₆	l ₇	t	r		b	k	WS ₁	WS ₂				F ₁	F ₂
[mm]															[mm]	[mm]		[N]						
with female thread – picture 1																								
M12 x 1,5	9.0	21	M4	M4	4.3	46.0	19	26	14	11.5	35	6	8	–	12	25	6	8	19	16	35	100	85	23230.0510
M16 x 1,5	12.0	21	M5	M5	5.3	56.0	27	34	18	15.5	47	8	10	–	14	35	8	10	24	25	71	100	153	23230.0512
M20 x 1,5	14.5	25	M6	M5	5.3	69.5	33	34	18	15.5	47	10	12	–	14	35	10	12	30	40	130	100	213	23230.0514

¹⁾ statistical average value

Dimensions																	Stroke s [mm]	WS		Spring load ¹⁾		max. [°C]	[g]	Art. No.																	
d ₁	d ₂	d ₃	d ₄	d ₅	d ₆	l ₁	l ₂	l ₃	l ₄	l ₅ -0.2	l ₆	l ₇	t min.	r	b	k		WS ₁	WS ₂	F ₁	F ₂																				
[mm]																	[mm]	[mm]		[N]		[°C]	[g]																		
with tipped point – picture 2																																									
M12 x 1,5	9.0	21	–	M4	4.3	46.0	19	26	14	11.5	35	6	–	–	12	25	6	8	19	16	35	100	85	23230.0530																	
M16 x 1,5	12.0	21	–	M5	5.3	56.0	27	34	18	15.5	47	8	–	–	14	35	8	10	24	25	71	100	152	23230.0532																	
M20 x 1,5	14.5	25	–	M5	5.3	69.5	33	34	18	15.5	47	10	–	–	14	35	10	12	30	40	130	100	209	23230.0534																	
with rounded pin – picture 3																																									
M12 x 1,5	9.0	21	–	M4	4.3	46.0	19	26	14	11.5	35	6	–	4.5	12	25	6	8	19	16	35	100	84	23230.0550																	
M16 x 1,5	12.0	21	–	M5	5.3	56.0	27	34	18	15.5	47	8	–	6.0	14	35	8	10	24	25	71	100	155	23230.0552																	
M20 x 1,5	14.5	25	–	M5	5.3	69.5	33	34	18	15.5	47	10	–	7.2	14	35	10	12	30	40	130	100	213	23230.0554																	
with prism – picture 4																																									
M12 x 1,5	9.0	21	–	M4	4.3	46.0	19	26	14	11.5	35	6	–	–	12	25	6	4	19	16	35	100	84	23230.0570																	
M16 x 1,5	12.0	21	–	M5	5.3	56.0	27	34	18	15.5	47	8	–	–	14	35	8	6	24	25	71	100	152	23230.0572																	
M20 x 1,5	14.5	25	–	M5	5.3	69.5	33	34	18	15.5	47	10	–	–	14	35	10	8	30	40	130	100	208	23230.0574																	

¹⁾ statistical average value

Application example



Compliance

RoHS compliant

Contains lead - compliant according to exceptions 6a / 6b / 6c.

Contains SVHC substances >0,1% w/w

Contains lead - SVHC list [REACH] as of 27.06.2024.

Contains Proposition 65 substances



Lead can cause cancer and reproductive harm from exposure

<https://www.P65Warnings.ca.gov/>

Free from Conflict Minerals

This product does not contain any substances designated as "conflict minerals" such as tantalum, tin, gold or tungsten from the Democratic Republic of Congo or adjacent countries.