

## Clamping Nuts • self-locking

EH 25030.



## Product Description

Clamping nuts are used for rotating parts, especially for reversible shafts, for example for fixing the grinding wheel. The compact construction ensures a safe function and allows quick installation using a face wrench.

Compared with other backup methods, the clamping nut has the following advantages:

- Self-locking (even with changing direction of rotation of the shaft)
- Easy installation / dismantling
- Also for repetitive clamping operations

## Material

- Heat-treated steel, blackened

## Assembly

The clamping nut consists of an outer and inner ring, which form a unit.

The outer ring has a conical bore, the slotted inner ring has a conical outer surface and a female thread.

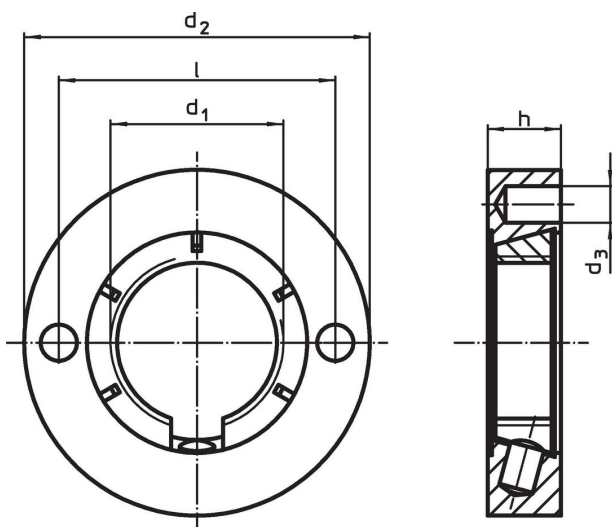
When tightening the clamping nut using a face pin wrench, the two conical surfaces move against each other. As a result, the slotted inner ring narrows like a collet. The nut clamps itself on the flanks of the thread so much, that they do not detach even with opposite axis rotation.

## More information

## Notes

Further dimensions on request.



## Drawing



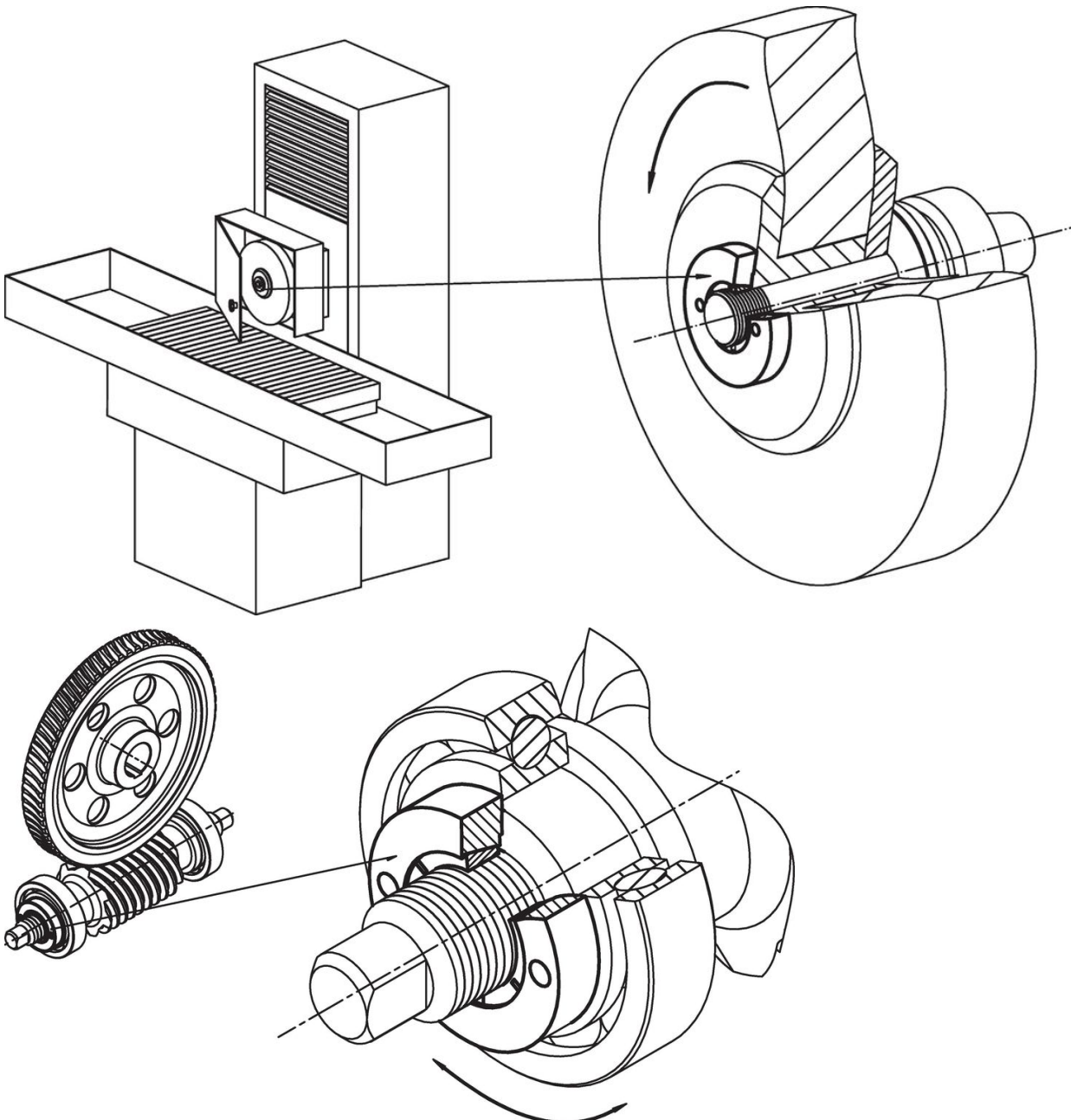
## Order information

| d <sub>1</sub> | Dimensions     |                |     |    | [g] | Art. No.   |
|----------------|----------------|----------------|-----|----|-----|------------|
|                | d <sub>2</sub> | d <sub>3</sub> | h   | l  |     |            |
| M20 x 1,5      | 40             | 4.1            | 8.5 | 32 | 58  | 25030.0020 |
| M20 x 1,5      | 50             | 4.1            | 8.5 | 32 | 104 | 25030.0021 |

Accessories

|   | <br>[g] | Art. No.   |
|---|--|------------|
| <b>adjustable face wrench, offset</b>   |  |            |
|  | 112  | 25030.0022 |

Application example



Compliance

For detailed compliance information please select the desired article number.