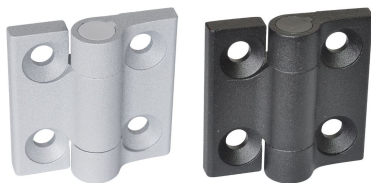


Hinges • Zinc die-cast
EH 25163.



Product Description

These hinges from zinc die-cast are characterised by their simple and timeless design.

Material

Body

- Zinc die-cast, plastic coated, silver, similar to RAL 9006, matt structure
- Zinc die-cast, plastic coated, black, similar to RAL 9005, matt structure

Covering

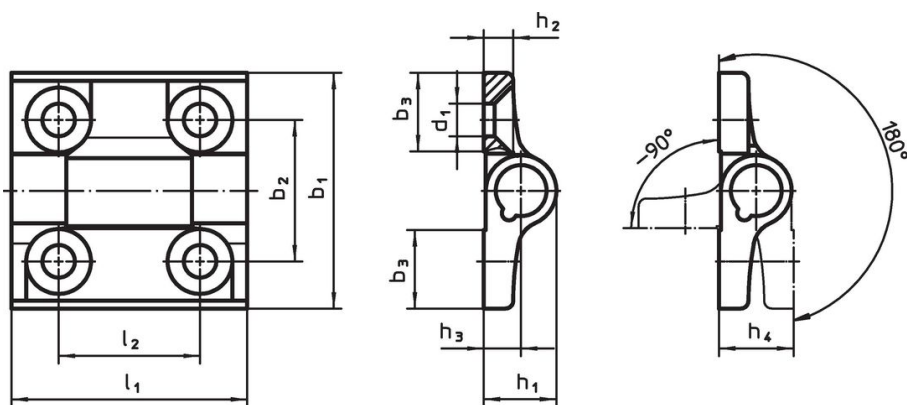
- Thermoplastic POM

More information

Further products

- Spacer Plates, for hinges
- Threaded Plates, for hinges

Drawing



Order information

Dimensions											max. [°C]	[g]	Art. No.		
b ₁	l ₁	b ₂	b ₃	d ₁	h ₁	h ₂	h ₃	h ₄	l ₂	[mm]					
Zinc die-cast, silver															
60	60	36	20	8.3	18.5	7.5	9.5	19	36	80	137	25163.0005			
Zinc die-cast, black															
60	60	36	20	8.3	18.5	7.5	9.5	19	36	80	137	25163.0105			

Compliance

For detailed compliance information please select the desired article number.